



2011 SUPERIOR | business awards

The Development Association, in partnership with the organizations below, announces the Superior Business Awards, an annual recognition of local business achievement.

The Chamber
Superior Rotary
Entrepreneur Fund
Superior Business Center
Superior Business Improvement District
UW-Superior Small Business Development Center

Six award categories have been established:

Business Hall of Fame (for entrepreneurs in the period for the previous 50 years from the current year)

Historical Business Hall of Fame (for entrepreneurs that operated businesses that existed prior to the last 50 years)

Small Business of the Year (more than 5 years in business with 25 or fewer employees)

Large Business of the Year (more than 5 years in business with over 25 employees)

Emerging Innovative Business (in business for at least 2 years but no more than 5 years with an innovative product, process or technology)

Business Plan Competition (business plan submitted by an entrepreneur for a start-up business or business expansion)

Partner organizations

The Chamber
Superior Rotary
Entrepreneur Fund
Superior Business Center
The Development Association
Superior Business Improvement District
UW-Superior Small Business Development Center

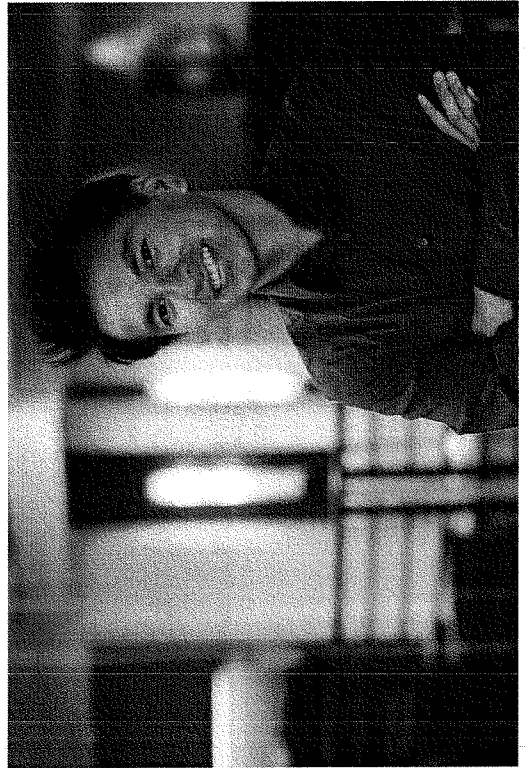
For more information, or to nominate a business for the Superior Business Awards, go to www.superiorchamber.org. Or call the Development Association at 715-392-4749.

Eligibility

- Business must be located in or entrepreneur must reside in Douglas County, Wisconsin.
- Hall of Fame nominees must be individuals (living or deceased) who reside/resided in Douglas County or who own/owned and operate/operated a for-profit business in Douglas County.
- Businesses nominated must be for-profit entities.

Process

- Call for nominations starting the week of May 9th, 2011.
- Nominations must be submitted by July 15th, 2011.
- Business/entrepreneurs may self-nominate.
- Nominees will be contacted by mail and asked to accept the nomination and complete a questionnaire. Completed questionnaires must be submitted by August 1st, 2011.
- Award recipients will be announced at the Superior Business Awards Banquet on September 15th, 2011.
- Award recipients will be chosen by a panel consisting of representatives from the following organizations: The Chamber, the Development Association, Northeast Entrepreneur Fund, Superior Business Center, Superior Business Improvement District, and UW-Superior Small Business Development Center. A separate panel will select the winners of the Business Plan Competition.



Emerging Innovative Business Award

Specific Eligibility:

- In business for at least 2, but not more than 5 years.
- Developed a unique/innovative process, technology or product.

Criteria:

- **Degree of innovation.** Product, process or technology is innovative, cutting edge, etc. Evidence based on patents, intellectual property or industry testimonials or reviews.
- **Growth of company.** Based on revenue and employee growth.
- **Exportability.** Percentage of revenues generated from sales to customers outside of the local area.
- **Financial Success.** Give evidence of financial success of the company.
- **Response to Adversity.** Examples of challenges faced by the business and steps taken to meet them.
- **Community Involvement.** Give evidence of contributions and commitment to community-oriented projects by the business.

Business Plan Competition

Specific Eligibility:

- Individuals must prepare a business plan.
- Any individual, 18 years or older.
- For profit business only.

Criteria:

- The competition is open to any existing business that is planning to implement a different aspect of and/or expansion of their business.
- The business plan may not exceed 40 pages of text and exhibits.
- If there are no plans that qualify, in the opinion of the judges, an award will not be given. The sponsoring organizations reserve the right to accept or reject any business plan.
- If the top winner initiates or significantly expands his/her business within one year of the award, he/she may become eligible for a \$20,000, zero interest loan.

Small Business of the Year

Specific Eligibility:

- In business for at least 5 years.
- Twenty-five or fewer employees.

Criteria:

- **Staying Power.** A substantiated history as an established business showing growth, diversity of products/services, etc.
- **Growth of company.** Based on revenue and employment numbers.
- **Exportability.** Percentage of revenues generated from sales to customers outside of the local area.
- **Financial Success.** Give evidence of financial success of the company.
- **Innovativeness of Product/Service.** Has developed a product, process or technology that is innovative, cutting edge, etc. Evidence based on patents, intellectual property or industry testimonials or reviews illustrated
- **Response to Adversity.** Examples of challenges faced by the business and steps taken to meet them.
- **Community Involvement.** Give evidence of contributions and commitment to community-oriented projects by the business.

Business Hall of Fame

Specific Eligibility:

- Must be a person who, within the last 50 years, has:
 - Owned or operated one or more businesses in Douglas County for at least 10 years; or
 - Has lived in Douglas County and has made a significant contribution throughout his/her career to the free enterprise system.

Criteria:

- **Business success.** The person has played a significant role in the success of a Douglas County business and/or the local economy.
- **Ethical standards.** The person has exhibited high ethical standards.
- **Role model.** The person serves as a role model for others in the business community.

Large Business of the Year

Specific Eligibility:

- In business for at least 5 years.
- More than 25 employees.

Criteria:

- **Staying Power.** A substantiated history as an established business showing growth, diversity of products/services, etc.
- **Growth of company.** Based on revenue and employment numbers.
- **Exportability.** Percentage of revenues generated from sales to customers outside of the local area.
- **Financial Success.** Give evidence of financial success of the company.
- **Innovativeness of Product/Service.** Has developed a product, process or technology that is innovative, cutting edge, etc. Evidence based on patents, intellectual property or industry testimonials or reviews illustrated
- **Response to Adversity.** Examples of challenges faced by the business and steps taken to meet them.
- **Community Involvement.** Give evidence of contributions and commitment to community-oriented projects by the business.

Historical Business Hall of Fame

Specific Eligibility:

- Must be a person who, prior to the last 50 years, has:
 - Owned or operated one or more businesses in Douglas County for at least 10 years; or
 - Lived in Douglas County and made a significant contribution throughout his/her career to the free enterprise system.

Criteria:

- **Business success.** The person played a significant role in the success of a Douglas County business and/or the local economy.
- **Ethical standards.** The person exhibited high ethical standards.
- **Role model.** The person served (or continues to serve) as a role model for others in the business community.

Small Business of the Year

Specific Eligibility:

- In business for at least 5 years.
- Twenty-five or fewer employees.

Criteria:

- **Staying Power.** A substantiated history as an established business showing growth, diversity of products/services, etc.
- **Growth of company.** Based on revenue and employment numbers.
- **Exportability.** Percentage of revenues generated from sales to customers outside of the local area.
- **Financial Success.** Give evidence of financial success of the company.
- **Innovativeness of Product/Service.** Has developed a product, process or technology that is innovative, cutting edge, etc. Evidence based on patents, intellectual property or industry testimonials or reviews illustrated
- **Response to Adversity.** Examples of challenges faced by the business and steps taken to meet them.
- **Community Involvement.** Give evidence of contributions and commitment to community-oriented projects by the business.

Business Hall of Fame

Specific Eligibility:

- Must be a person who, within the last 50 years, has:
 - Owned or operated one or more businesses in Douglas County for at least 10 years; or
 - Has lived in Douglas County and has made a significant contribution throughout his/her career to the free enterprise system.

Criteria:

- **Business success.** The person has played a significant role in the success of a Douglas County business and/or the local economy.
- **Ethical standards.** The person has exhibited high ethical standards.
- **Role model.** The person serves as a role model for others in the business community.

Large Business of the Year

Specific Eligibility:

- In business for at least 5 years.
- More than 25 employees.

Criteria:

- **Staying Power.** A substantiated history as an established business showing growth, diversity of products/services, etc.
- **Growth of company.** Based on revenue and employment numbers.
- **Exportability.** Percentage of revenues generated from sales to customers outside of the local area.
- **Financial Success.** Give evidence of financial success of the company.
- **Innovativeness of Product/Service.** Has developed a product, process or technology that is innovative, cutting edge, etc. Evidence based on patents, intellectual property or industry testimonials or reviews illustrated
- **Response to Adversity.** Examples of challenges faced by the business and steps taken to meet them.
- **Community Involvement.** Give evidence of contributions and commitment to community-oriented projects by the business.

Historical Business Hall of Fame

Specific Eligibility:

- Must be a person who, prior to the last 50 years, has:
 - Owned or operated one or more businesses in Douglas County for at least 10 years; or
 - Lived in Douglas County and made a significant contribution throughout his/her career to the free enterprise system.

Criteria:

- **Business success.** The person played a significant role in the success of a Douglas County business and/or the local economy.
- **Ethical standards.** The person exhibited high ethical standards.
- **Role model.** The person served (or continues to serve) as a role model for others in the business community.